

# . Berkeh Co.

## Submersible Aerator /Aerajet



BSAJ Type



BSAC Type

## **APPLICATIONS:**

The submersible aerators/aerjets type BSAC/BSAJ are suitable for all fluid reactions at temperatures below 70 C and pressures below 2 Bara.

- **Application in mixing and equalizing basis :**

equalizing of wastewater pollution load and wastewater quantities , as well as avoidanve of odour problems .

- **Activated sludge basins SBR reactors :**

Biological degredation of organic substances .

- **Flotation :**

Flotatation of oil and grease .

- **Sludge stabilisation :**

avoidance of odour problems as well as futher oxidation of organic substances .

- **Neutralization :**

Neutralization of alkaline wastewater with  $\text{CO}_2$  or flue gas .

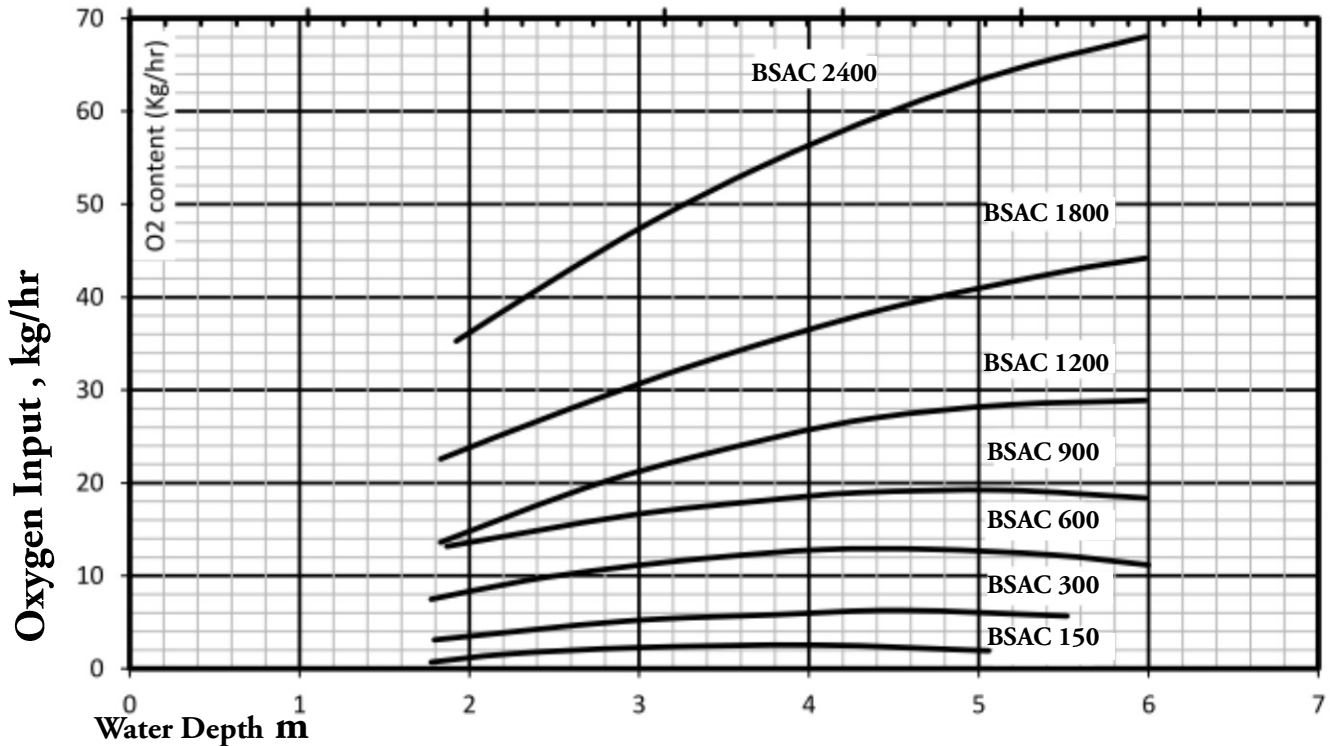
- **Special application :**

Aeration with air or pure oxygen.

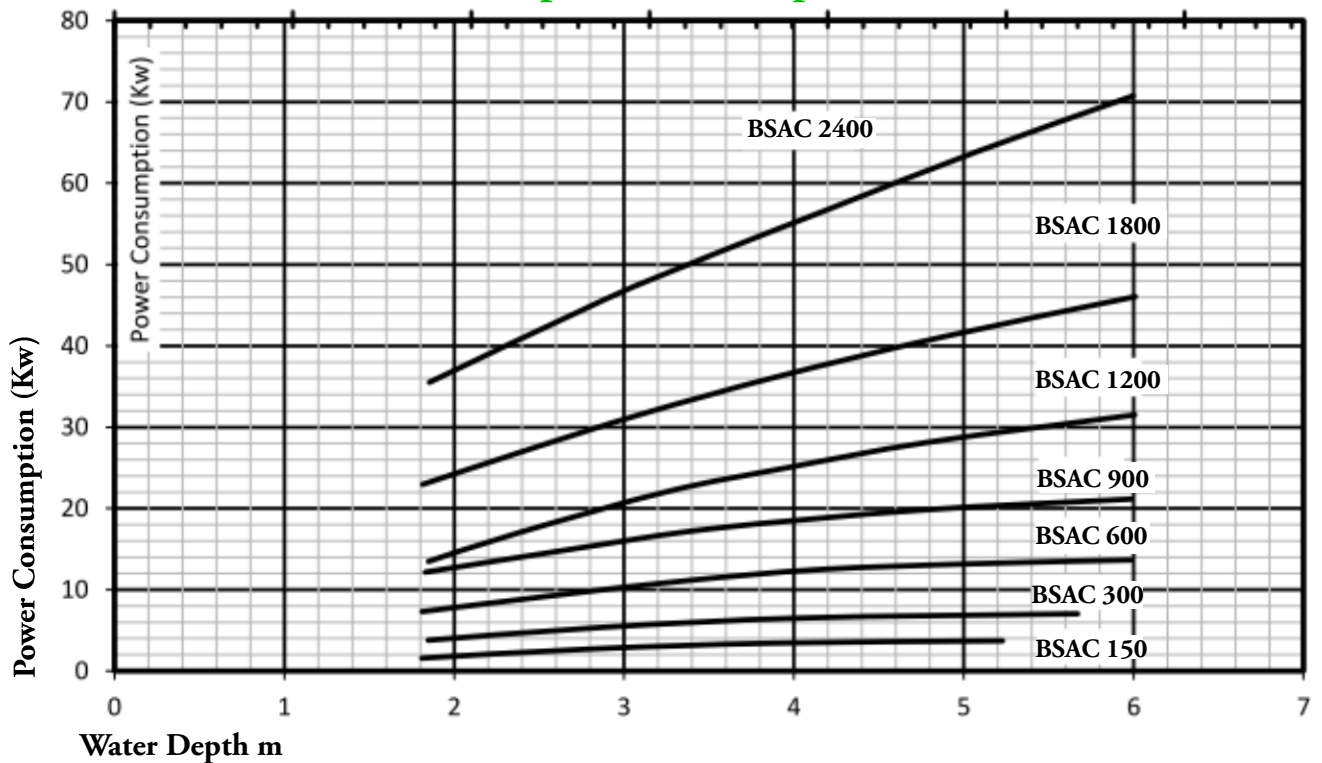


## Characteristic Curves Of BSAC :

### Oxygen Input



### power consumption



## Technical Data :

TYPE	M.p (kw)	speed rev/min	MAX Oxygen input Kg/hr	Immersion depth m	WEIGHT (Kg) (APPROX)
BSAC150	4	1450	3	1.5-4	130
BSAC 300	7.5	1450	7	1.5-4	160
BSAC 300T	11	1450	7.5	1.5-6	180
BSAC 600	11	1450	13	1.5-4	340
BSAC 600T	18.5	1450	15	1.5-6	380
BSAC 900	18.5	1450	18	1.5-4	470
BSAC 900T	22	1450	21	1.5-6	490
BSAC 1200	22	1450	26	1.5-4	540
BSAC 1200 T	30	1450	30	1.5-6	580
BSAC 1800	37	1450	36	1.5-4	610
BSAC 1800 T	45	1450	44	1.5-6	650
BSAC 2400	75	1450	70	1.5-6	900

## Materials :

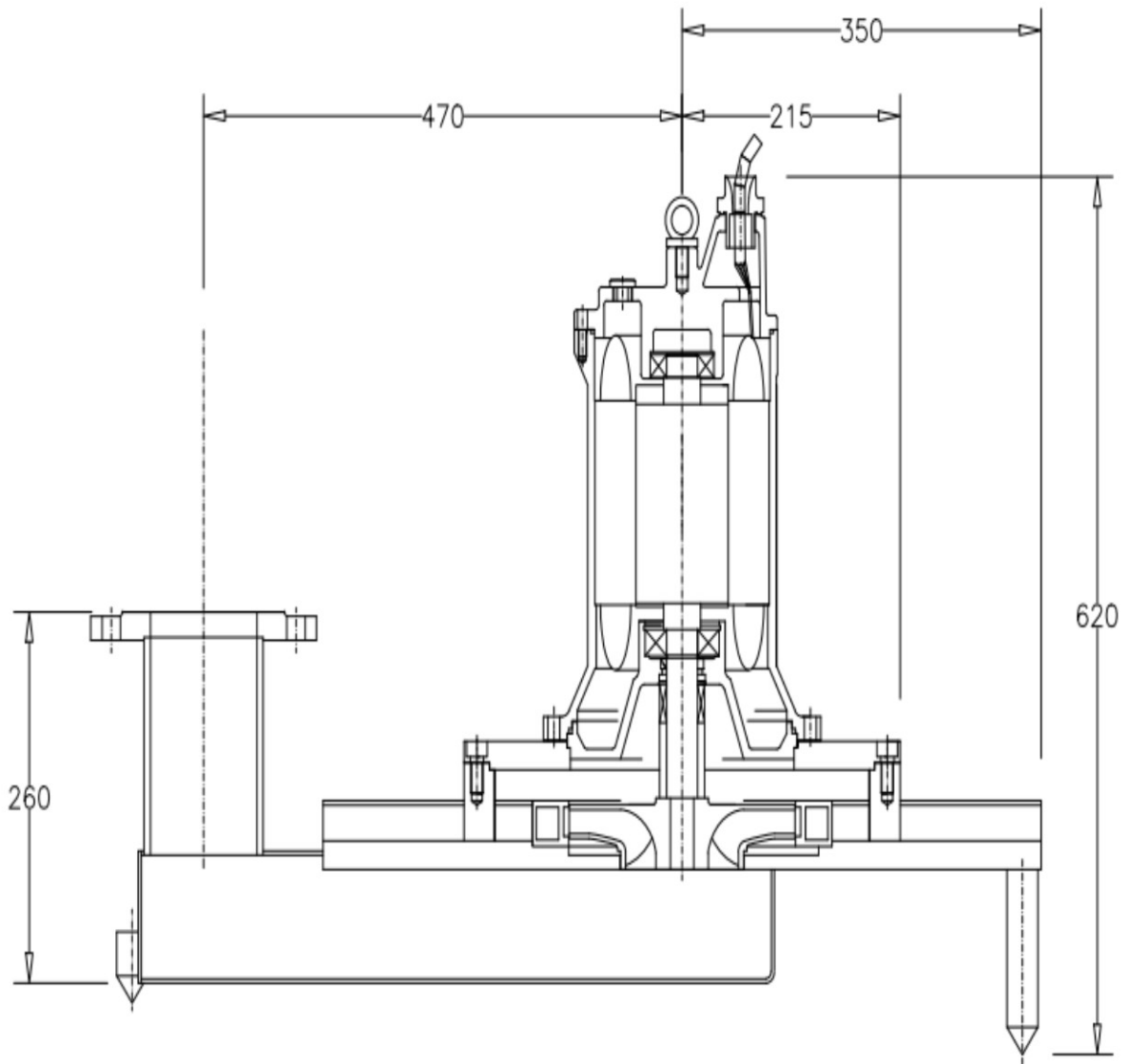
- Motor Housing
- Shaft
- Fasteners
- Aerator Parts
- Guide blade rim

**Cast Iron**  
**S.S.420**  
**Stainless Steel**  
**Stainless Steel**  
**St.37-2**

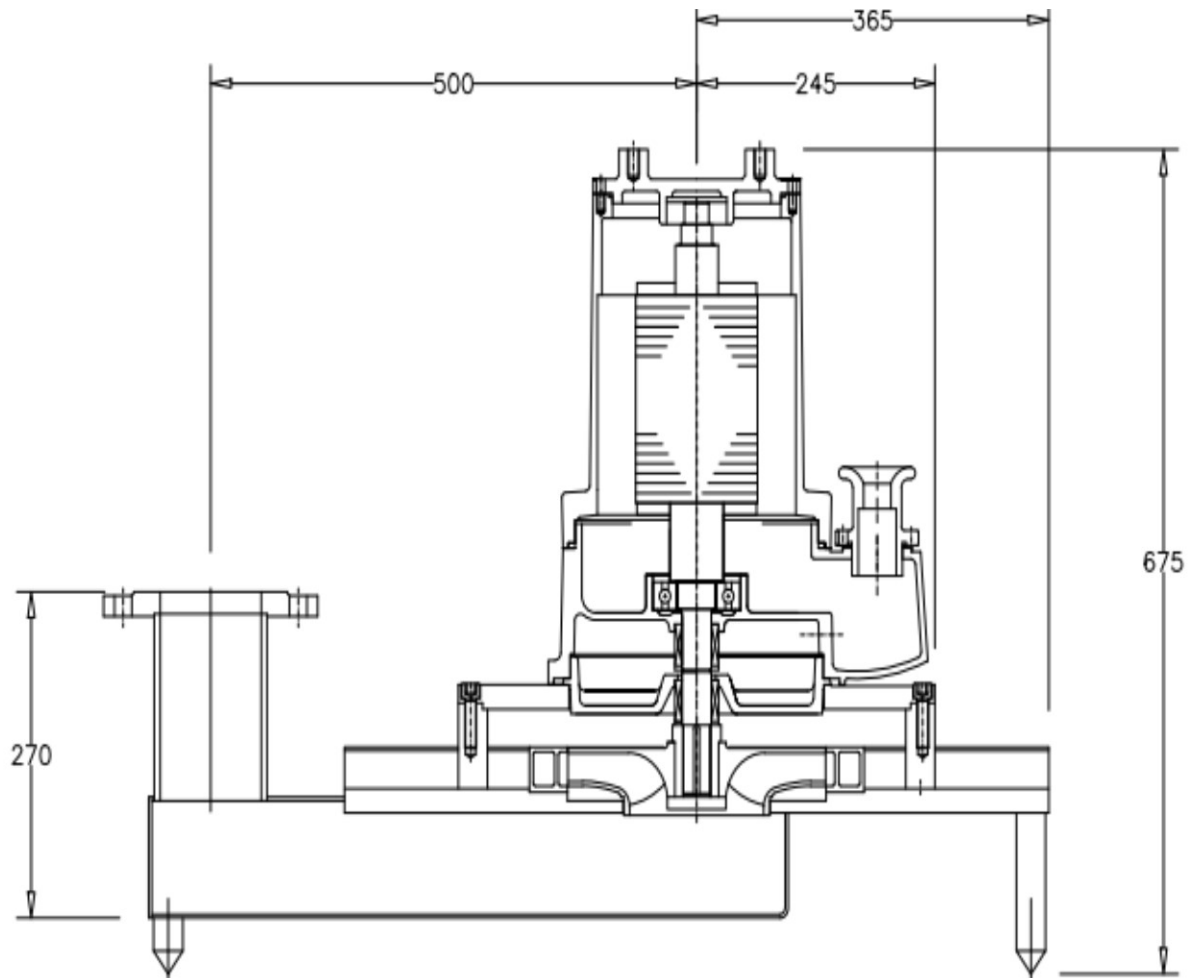
\*\* Material is changeable on request

**Dimension Sample :**

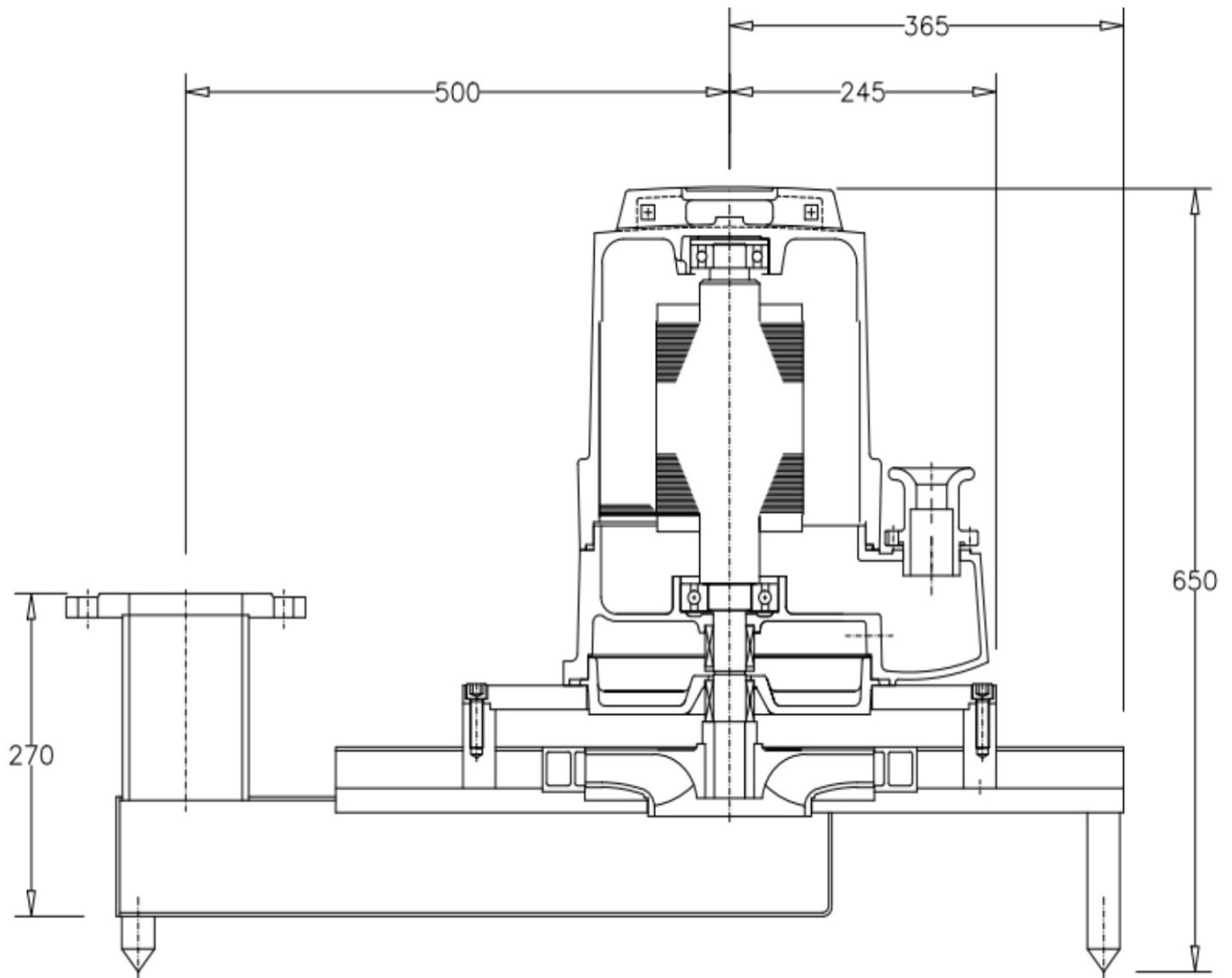
**BSAC 150**



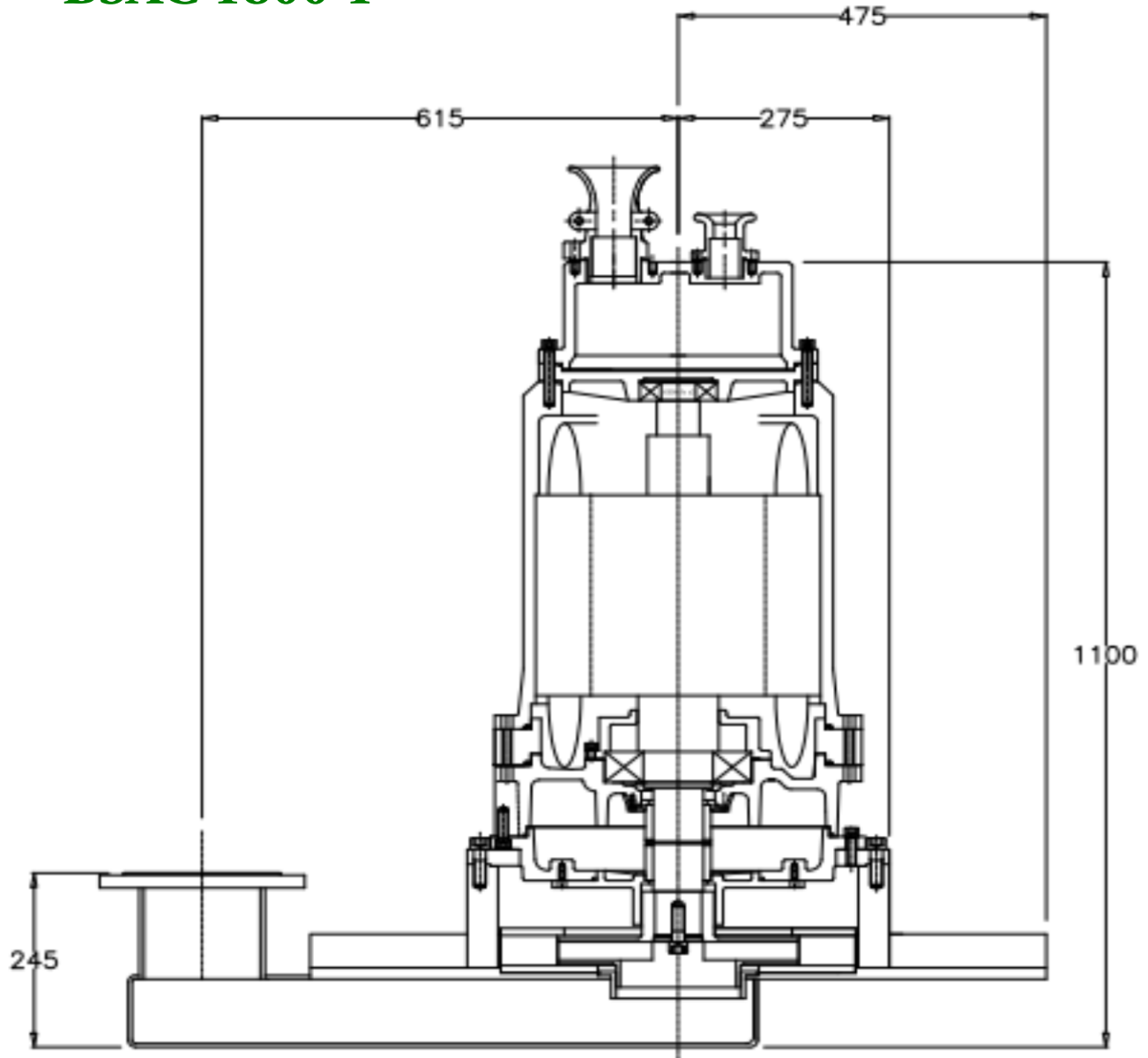
## BSAC 300



## BSAC 900



## BSAC 1800 T





## APPLICATIONS :

The flexibility of the AeroJet offers distinct advantages for upgrading aeration capacity to meet increased oxygen demands. It can be used either alone or as a supplement to existing aeration equipment. AeroJets are available in many different sizes to ensure that all needs can be met, no matter what the size and shape of the tank .

- **Application in stormwater retention tanks**
- **Stormwater overflow basins**
- **Stormwater setting basins**

### Construction :

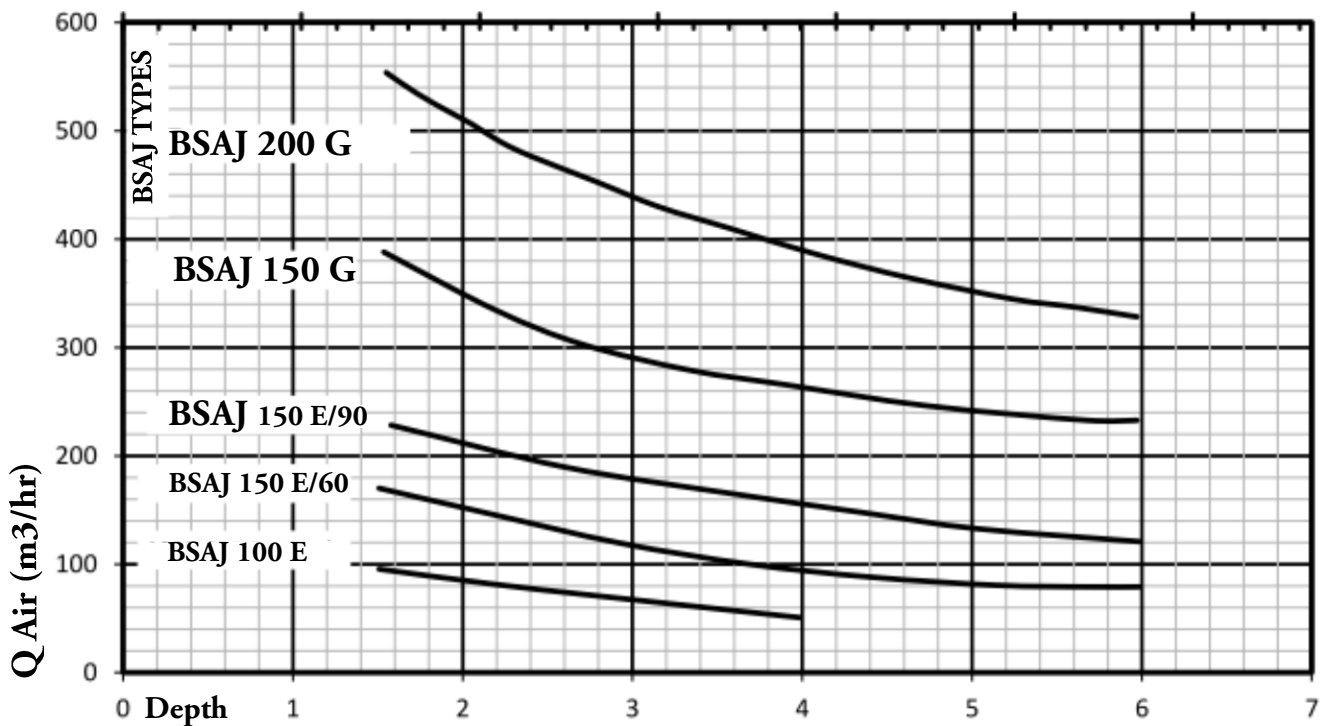
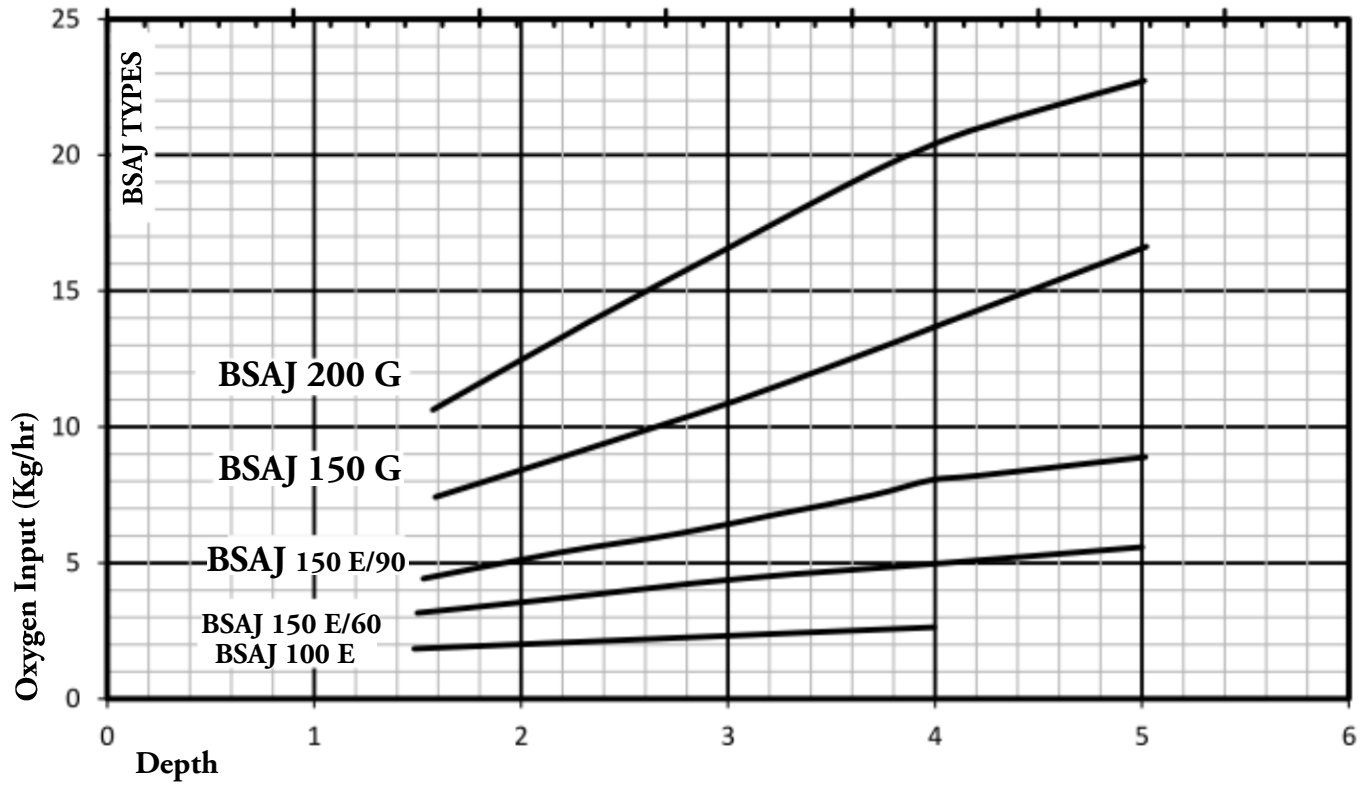
- . **Easy and quick instalation.**
- . **Good oxygen transfer .**
- . **Self-cleaning system .**
- . **Replaceable wear parts .**

## Fluids handled :

- . **Water**
- . **Stormwater**
- . **Mixed water**



## Characteristic Curves Of BSAJ :



**BERKEH CO .**

## Technical Data :

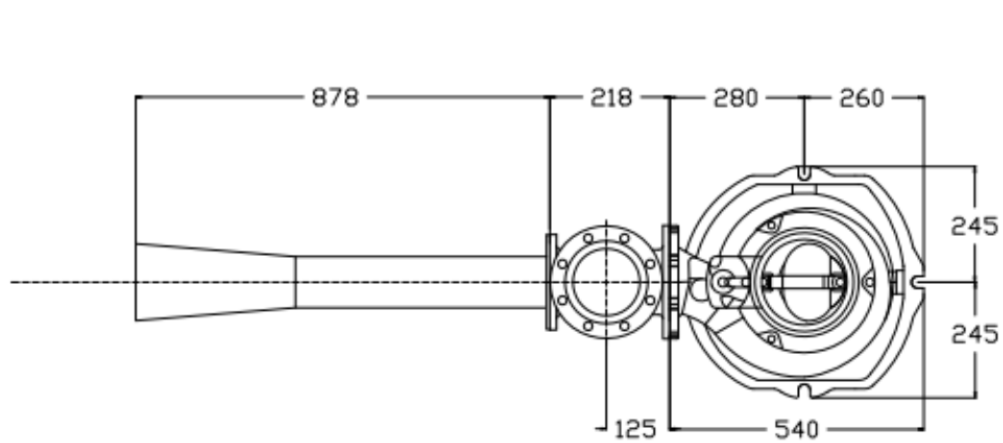
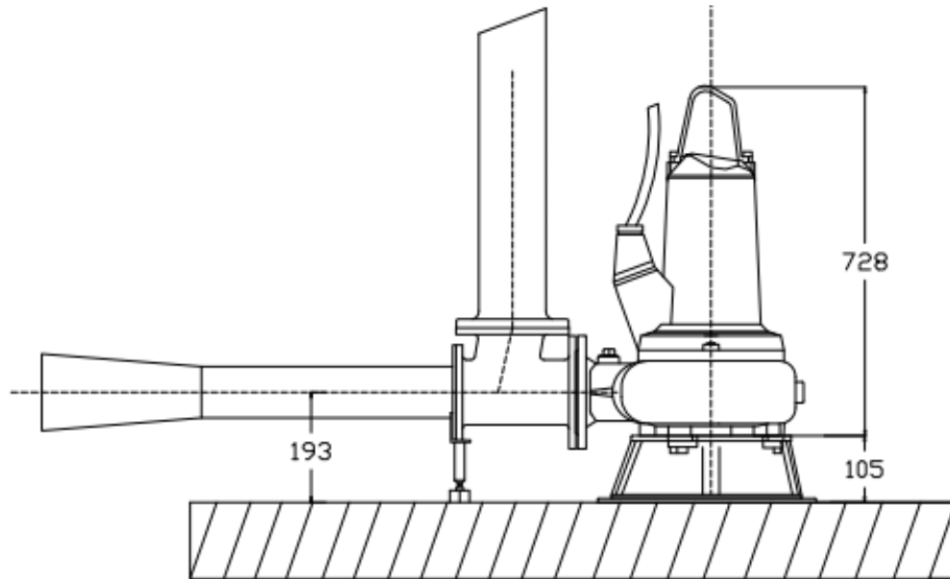
TYPE	M.P (Kw)	SPEED (Rev/Min)	AERAJET Discharge ( DIN )	Water Flow (m3/hr)	Immersion Depth (m)
<b>BSAJ 100 E</b>	<b>4</b>	<b>1450</b>	<b>100</b>	<b>140</b>	<b>1.5 - 6</b>
<b>BSAJ 150 E/60</b>	<b>7.5</b>	<b>1450</b>	<b>150</b>	<b>190</b>	<b>1.5 - 6</b>
<b>BSAJ 150 E/90</b>	<b>11</b>	<b>1450</b>	<b>150</b>	<b>240</b>	<b>1.5 - 6</b>
<b>BSAJ 150 G</b>	<b>18.5</b>	<b>1450</b>	<b>150</b>	<b>315</b>	<b>1.5 - 6</b>
<b>BSAJ 200 G</b>	<b>18.5</b>	<b>1450</b>	<b>200</b>	<b>500</b>	<b>1.5 - 6</b>

## Materials :

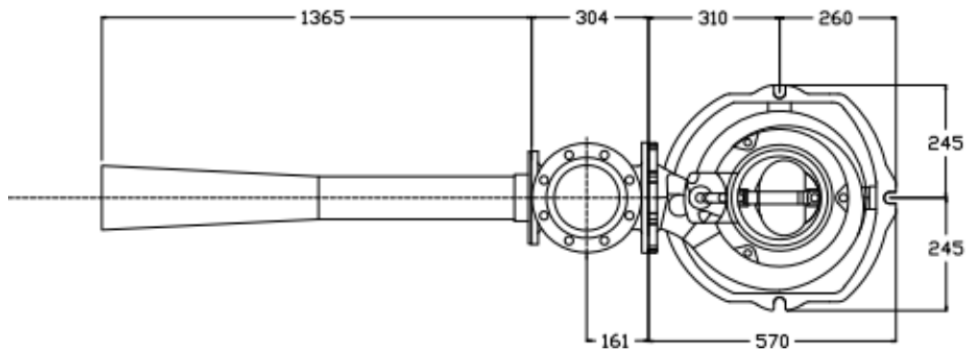
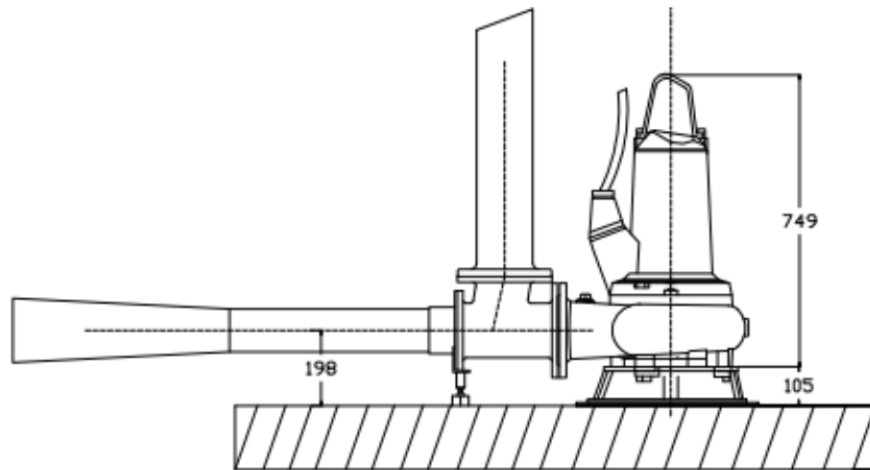
<ul style="list-style-type: none"> <li>- Motor Housing</li> <li>- Shaft</li> <li>- Fasteners</li> <li>- Aerator Parts</li> </ul>	<ul style="list-style-type: none"> <li><b>Cast Iron</b></li> <li><b>S.S. 420</b></li> <li><b>Stainless Steel</b></li> <li><b>Stainless Steel</b></li> </ul>
<p><b>** Material is changeable on request</b></p>	

**Dimensions :**

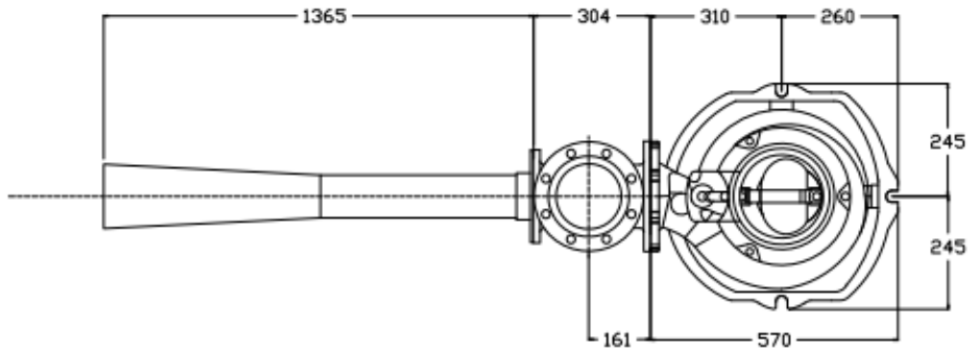
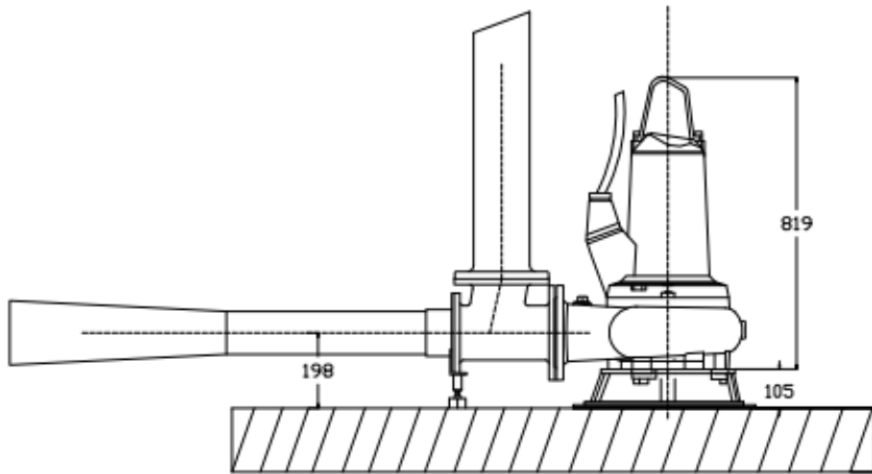
**BSAJ 100 E**



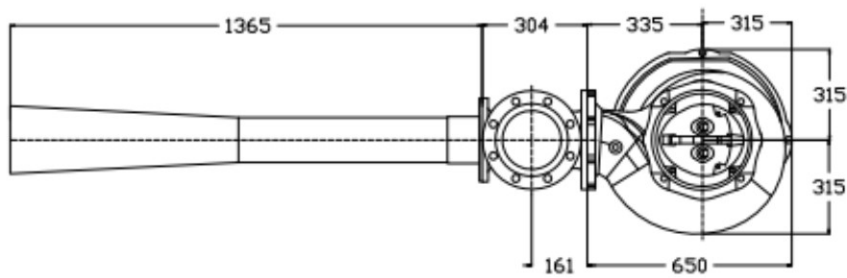
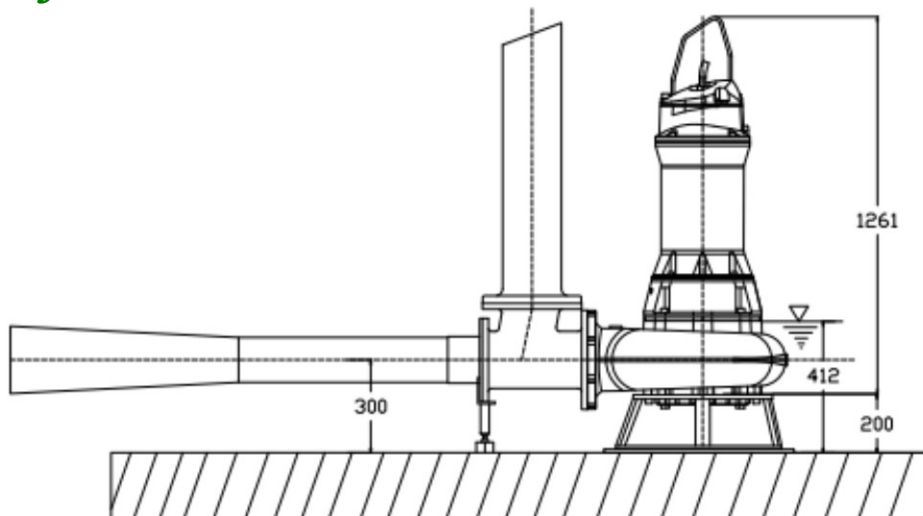
## BSAJ 150 E/60



## BSAJ 150 E/90



## BSAJ 150 G



## BSAJ 200 G

